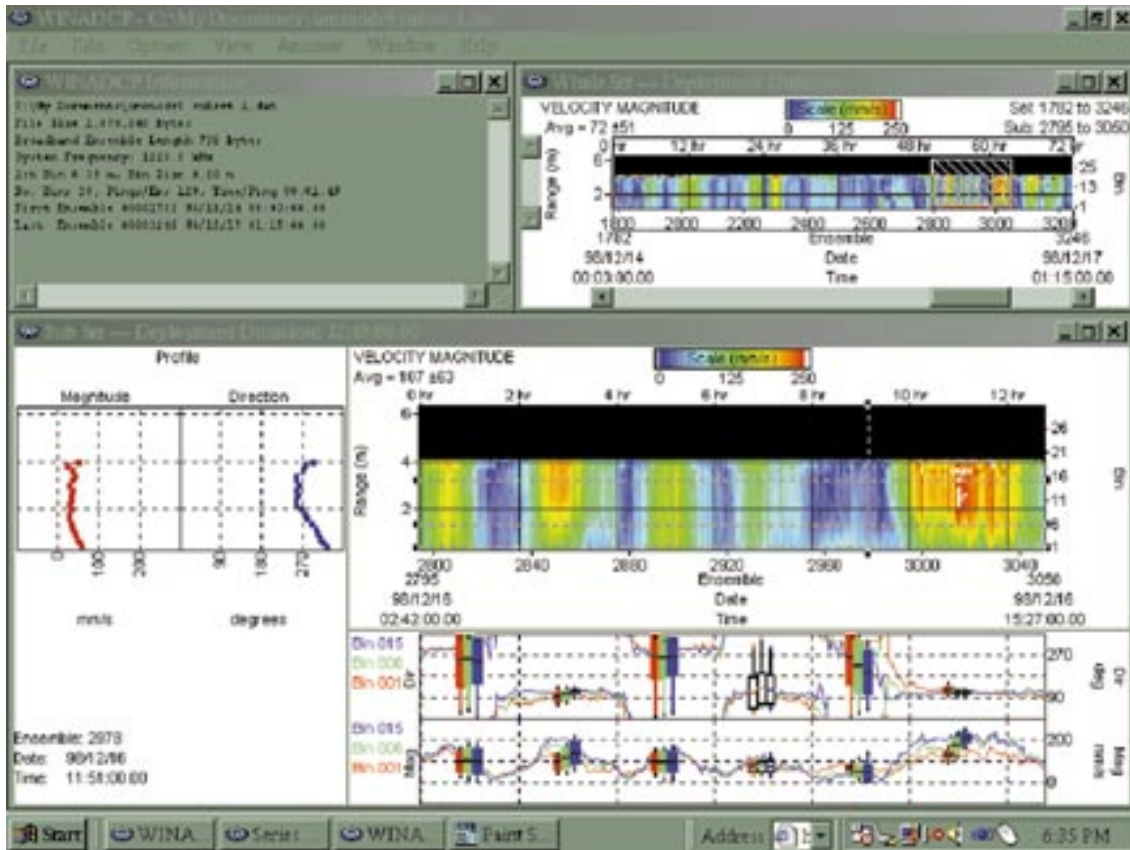


WinADCP

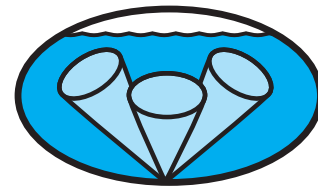
Self Contained Software for all
Broadband and Workhorse ADCPs



- Operates with Windows 95-98-NT
- Quickly transforms data into information
- Immediate access to data points
- Interactive break-out views
- Instant access to statistics to assimilate data

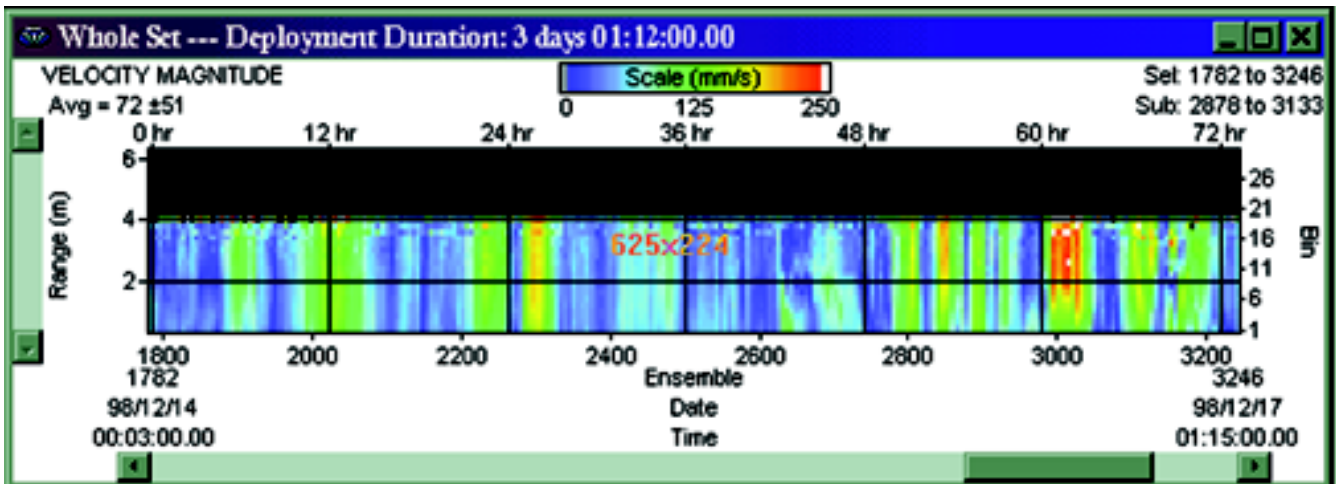
ADCP Data Display Tool Kit

- Quick to learn and easy to use
- Effective and productive analysis
- Makes impressive reports
- Saves you time, money, frustration



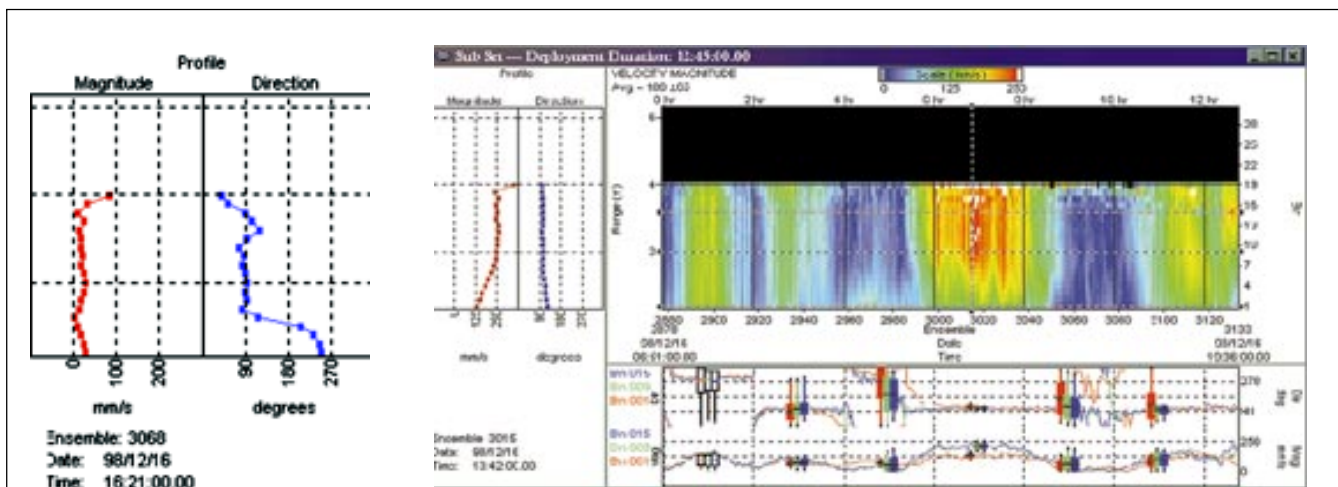
RD Instruments

phone 619-693-1178 fax 619-695-1459
rdi@rdinstruments.com www.rdinstruments.com



Whole Set Window: Contour display of the entire data set. Vertical axis - data set first to last bin. Horizontal data set—first to last ensemble. Selectable data type e.g.: Velocity, Amplitude, Correlation.

Sub Set Windows: Three views of a portion of the data set.

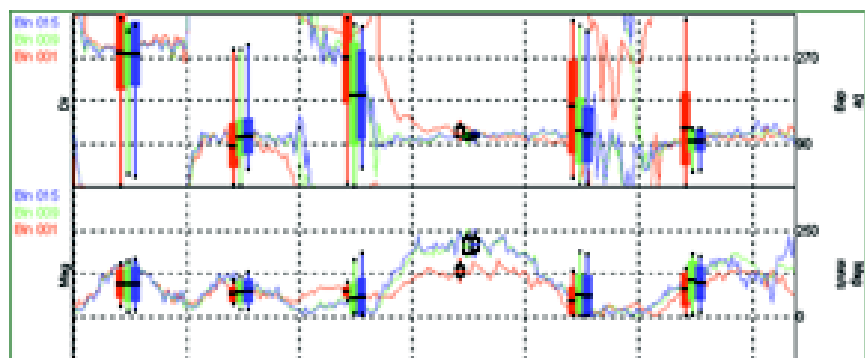


Profile: Various data types for selected ensemble.

Contour: Vertical axis—selected first to selected last bin. Horizontal axis—selected first to selected last ensemble. Selectable data type.



Series Trend and Residuals Window: Select a portion of the time Series and apply a filter to sort the signal from the noise. Also shows tabular statistics display of the selected data.



Series: Time Series of selected bins/data types.

Other display windows (not shown)

Information Window: File and ADCP Setup facts for the current data set.

Viewer Window: Tabular display of all information for selected bin and ensemble. Moving the mouse pointer over the Sub Set window selects the bin and the ensemble.

Export Window: Select data for conversion from RDI binary to .txt and/or .mat file formats