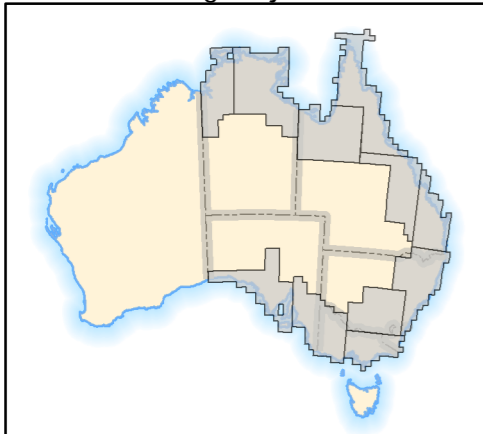


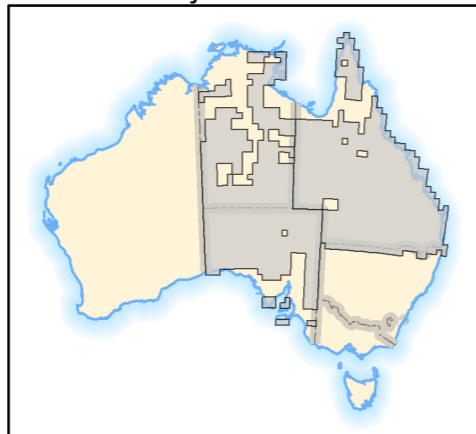


NATIONAL MAPPING DATA CAPTURE & REVISION WORK PROGRAM 2008-09 @ 10 June 2009

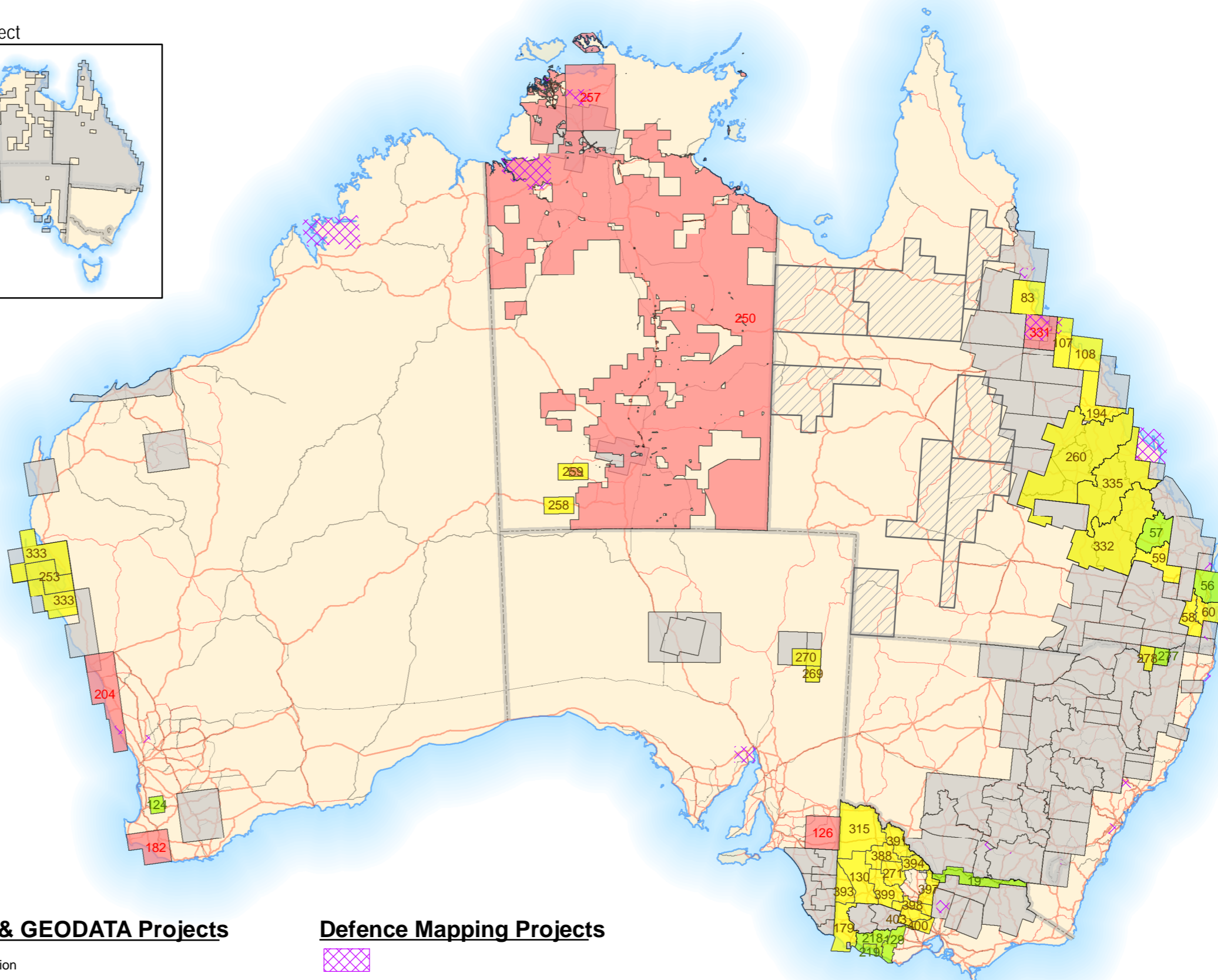
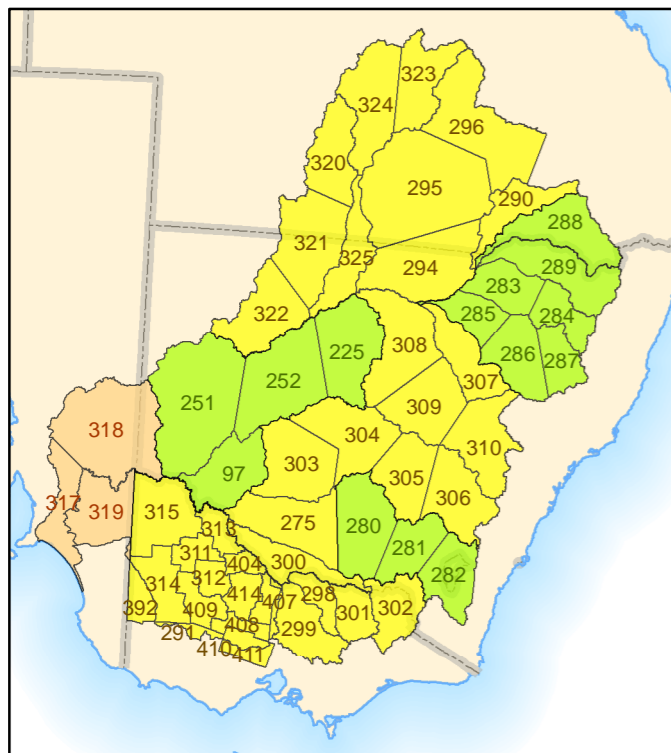
Georeferencing Project



Contours Project



Murray Darling Basin Waterbodies Project



NTICI Projects

- On Program
- Compilation
- Production
- Finalisation
- Completed

NATMAP & GEODATA Projects

- Compilation
- Production
- Completed

Defence Mapping Projects



Project Terminology

Compilation: stage of Project Scoping & Planning, Geographic Research, Work Preparation & Bid
 Production: stage of Production and Validation (In VAT)
 Finalisation: stage of Post-Production, Delivery to Clients and Project Completion