



Australian Government

Geoscience Australia

Journey of Spatial Metadata in Australia

Andrew Whiting

13th July 2018

Canberra

GEOSCIENCE AUSTRALIA IS THE AUTHORITY ON PROVIDING
FUNDAMENTAL GEOGRAPHIC INFORMATION FOR THE NATION

Background

Metadata feedback from custodians:

- Standards are confusing. *Very few can understand*
- Applying metadata is challenging and expensive.
- To update my system, it's a significant impost. *Low Priority*
 - *Challenge to find someone who can*

Even between us experts, there is a lot of questions and perceived confusion

catalogues?

- I have to change my base metadata quality to meet the harvesters needs.
- What is my neighbour doing?
- Have I got the latest version of the standard?
- Are there resources to help me implement?



Workshops
discussion
spatial data

Metadata is a
common
discussion

FSDF Roadmaps

November 2017 – Two roadmaps endorsed by ANZLIC and ICSM

Consumability Roadmap

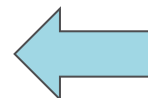
Identify datasets of focus (roads)	PMO - GA						
Establish dedicated PCTI taskforce		ICSM					
FSDF Taskforce established - Chair GA			TF				
Recommendation document focusing on dataset:			TF				
~ Symbology			TF				
~ Attribution convention - or common ontology			TF				
~ Common naming conventions (to improve discoverability)			TF				
~ Datum - projection - 2d v 3d			TF				
~ Vocabularies			TF				
~ Output: Recommendations document for publishing dataset service			TF				
Alignment of recommendations with other initiatives				PMO - GA			
Review, endorse & publish dataset recommendations							
Published recommendations document for publishing webservice					ICSM		
Individual projects scoped to address custodial change <small>see table Sheet 10</small>						PMO - GA	
Collaborative projects to implement change with custodians						PMO - GA	PMO - GA
to implement recommendations and ensure every dataset is published as a wms as a minimum						Custodian	Custodian

Discoverability Roadmap

Re-Establish the National metadata working group containing representation from all governments metadata custodians.	PMO - GA						
	ICSM						
	ANZLIC						
	MDWG						
Develop best practice guide for implementing and managing MD			MDWG				
ICSM review MD best practice guide, table for ANZLIC endorsement				ICSM			
ANZLIC endorse MD best practice guide and publish					ANZLIC		
~ ANZLIC best practice guide for managing metadata published					ANZLIC		
Metadata maturity framework developed	PMO - GA						
Current state of metadata documented and maturity assessed		PMO - GA					
Recommendations on how to transform issues in current state of national capabilities			MDWG				
Ensure recommendations are consistent with other initiatives i.e. EMSINA				PMO - GA			
Individual projects scoped to address custodial metadata issues					PMO - GA		
Document metadata elements bespoke to specific dataset, for consideration within metadata statement					TF		
Collaborative projects activated with custodians to ensure FSDF metadata is consistently implemented, accessible via CSW's						PMO - GA	PMO - GA
						Custodian	Custodian

Roadmap Legend

PMO - GA	FSDF Program Management Office – Geoscience Australia
ICSM	Intergovernmental Committee on Surveying and Mapping
ANZLIC	Australian & New Zealand Land Information Council
TF	FSDF Dataset Taskforce
MDWG	Metadata Working Group
Custodian	FSDF Dataset Custodian (input, aggregation or output)



Current focus

Metadata

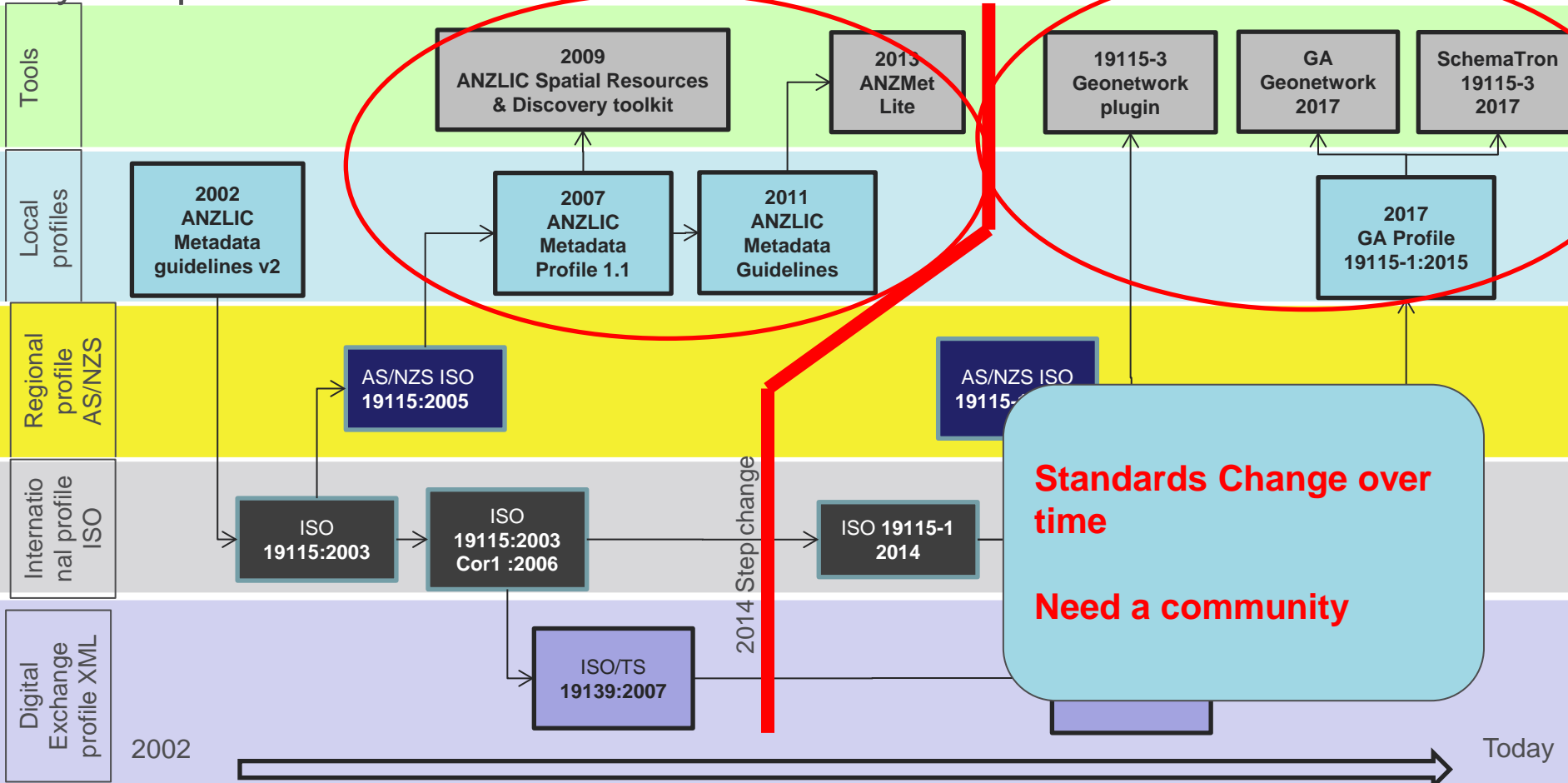
- Metadata has a number of national and international standards
- **Issue is in the way everybody has implemented the standard**
- This means to consume metadata into bespoke applications like the LINK, ELVIS, National Map, data.gov.au

We have to write bespoke code

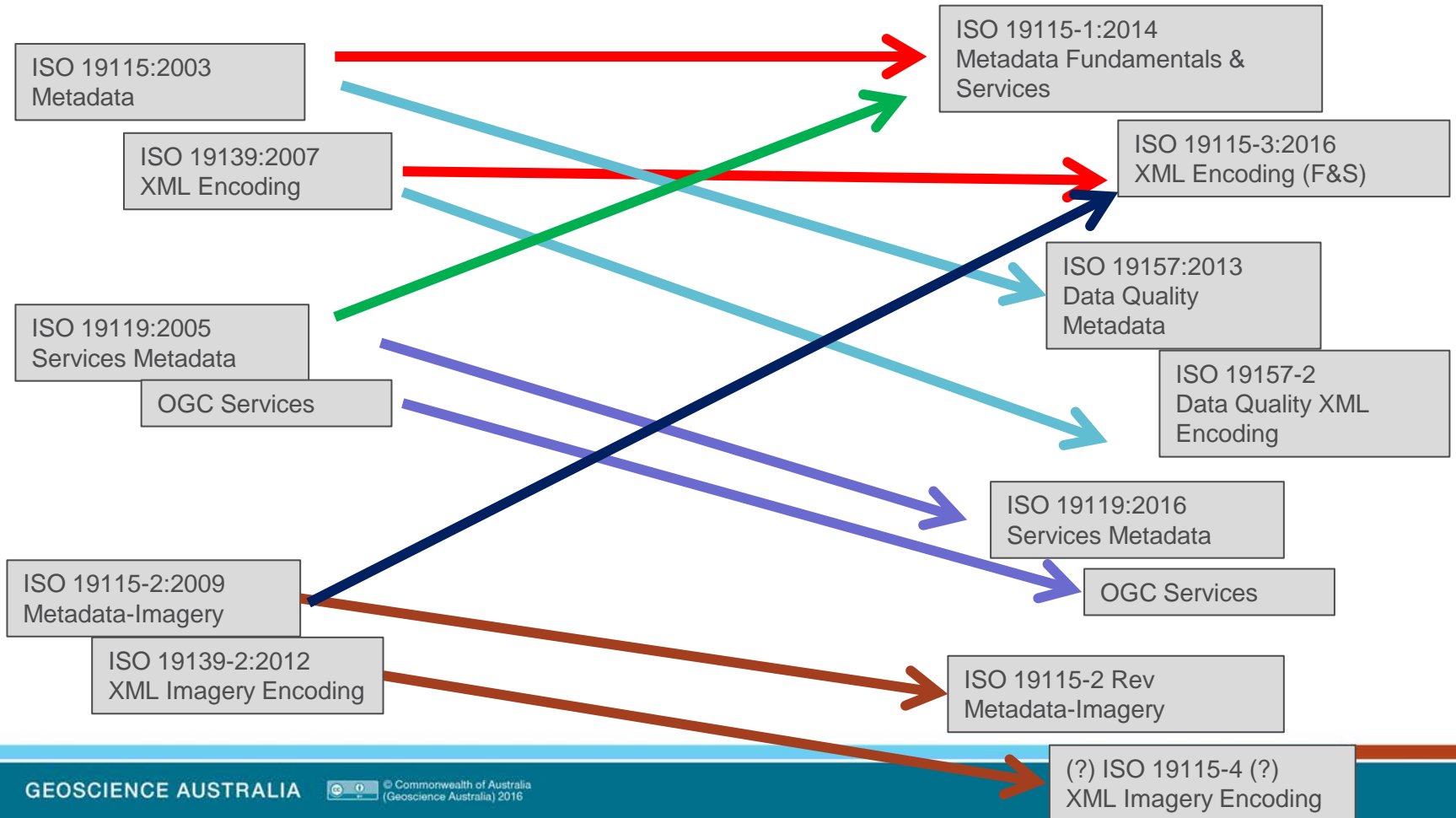


My interpretation of the Standards Environment

Our Journey

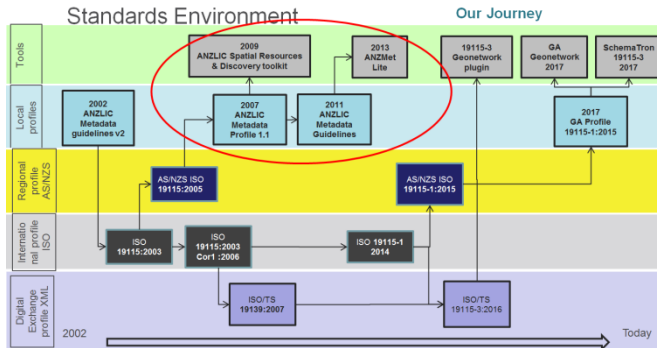


ISO 19115 – What's new and what's different

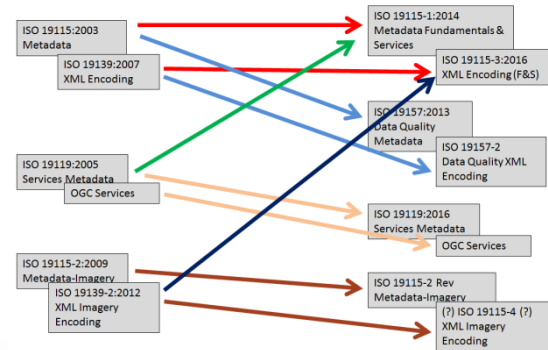


Inconsistency is not a surprise

- Its important to be aware:
 - Standards will continually evolve, which mean they require **active management and governance**
- **We need easy ways to achieve consistency**
- **Metadata and standards are Just as valuable as the data we produce**



ISO 19115 – What's new and what's different



Outcomes form the working group

- Develop a **community profile** based off the new standard
 - Propose the **adoption** by ANZLIC (only elements contained within the standard)
- Develop some easy to use **best practice** resources to ‘**easily**’ assist custodians in transitioning to the new standard including:
 - Updated websites
 - Tools – catalogues, QA systems, production systems
- Maintain a active forum for
 - Communication both within the community and to outside domains
 - Provision of advice to those who need it, and to
 - Monitor and respond to the developments within the standards ecosystems (ISO, OGC, W3C)



Australian Government

Geoscience Australia

Phone: +61 2 6249 9111

Web: www.ga.gov.au

Email: feedback@ga.gov.au

Address: Cnr Jerrabomberra Avenue and Hindmarsh Drive, Symonston ACT 2609

Postal Address: GPO Box 378, Canberra ACT 2601